

Walkway

Assembly Instruction Manual



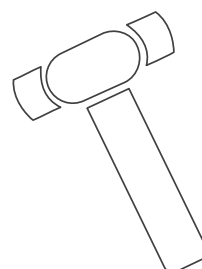
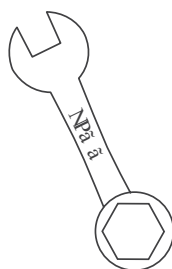
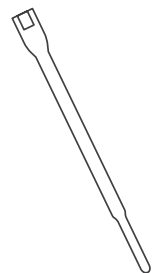
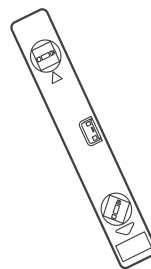
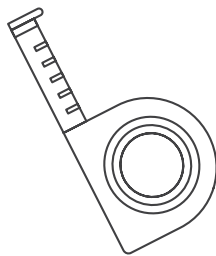
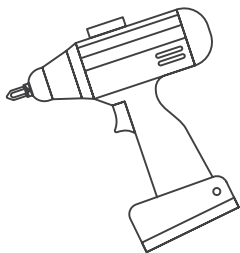
✉ support@con-formgroup.com.au

🌐 con-formgroup.com.au

Contents

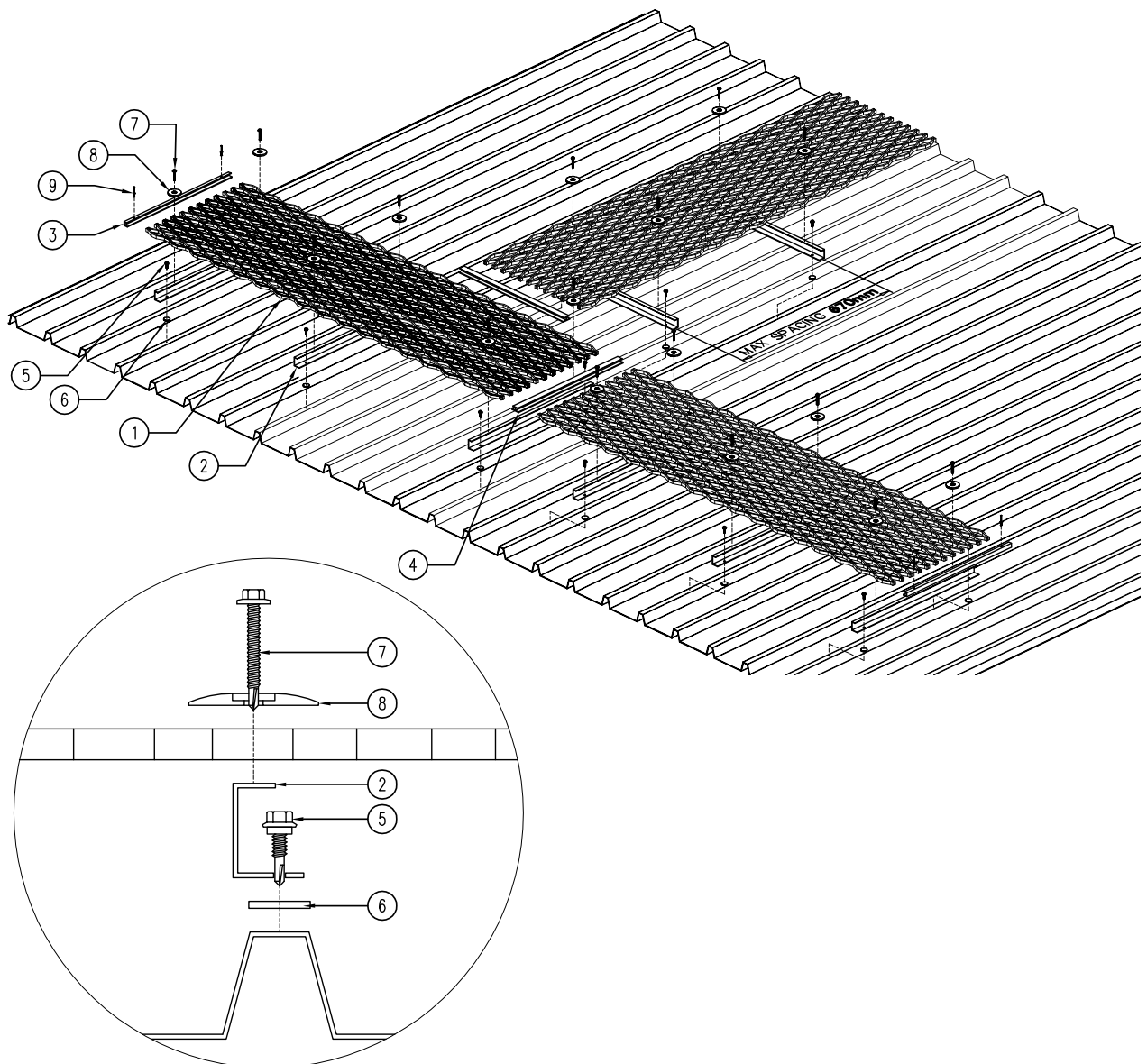
- Walkway - no handrails **02**
- Walkway - with handrails **03**

Tools required



WALKWAY

No handrails

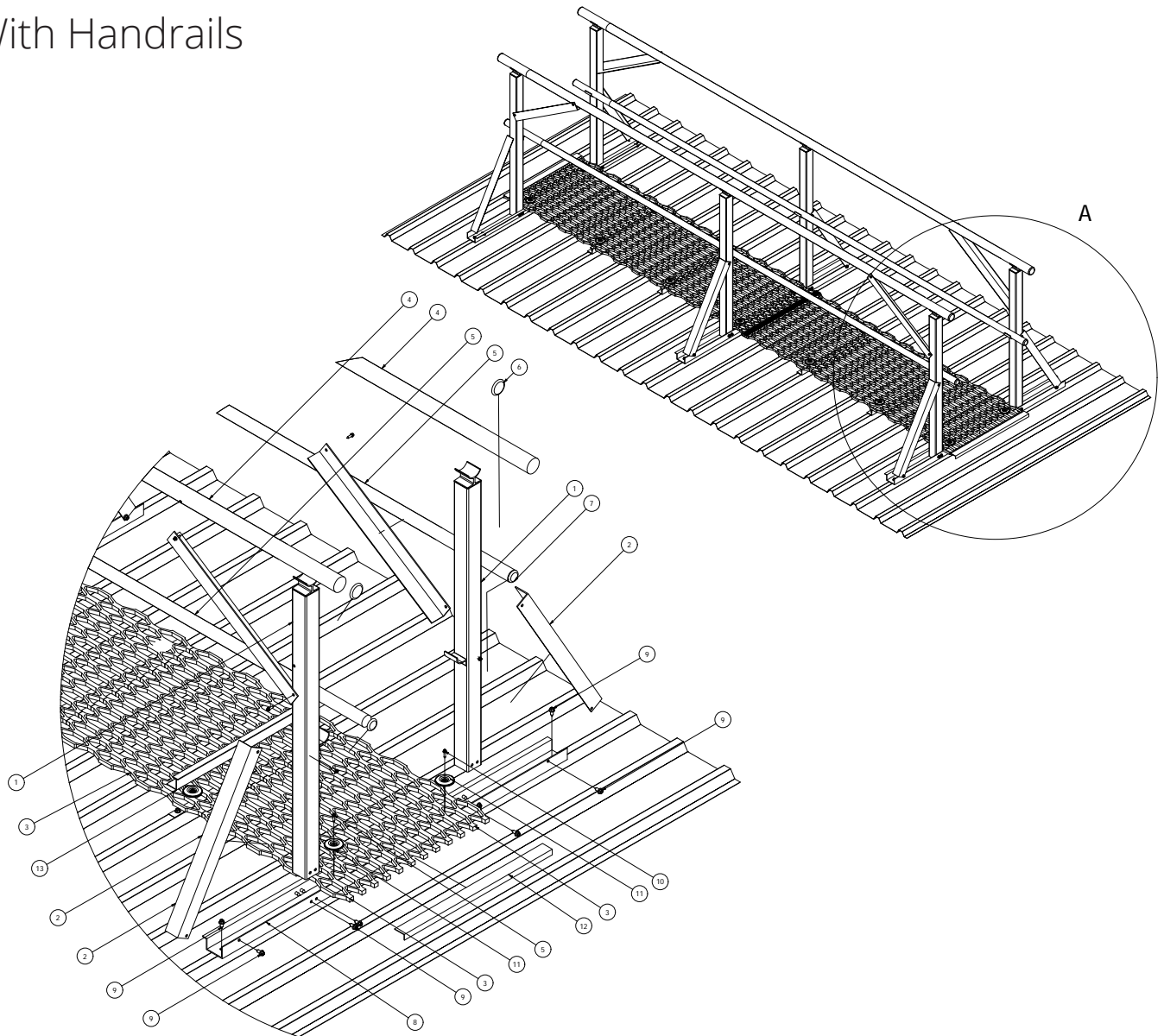


Components

- | | |
|-----------------------------|---|
| 1. Walkway mesh 600mm wide | 5. Tek Screw Gal 12-14 x 20mm with Neo Washer |
| 2. Walkway Batten 600m | 6. Foam Rubber Tape |
| 3. Walkway Edge Bar 600mm | 7. Tek Screw Gal 12-14 x 35mm With Neo Washer |
| 4. Walkway Joiner Bar 600mm | 8. Walkway Fixing Disc |

WALKWAY

With Handrails



Components

DETAIL A
SCALE 1:5

- | | |
|--------------------------------|--|
| 1. Handrail Post 1080 | 8. Support Channel |
| 2. Post Stabiliser Strut 500mm | 9. Tek Screw Gal 12-14 x 20mm with Neo Washer |
| 3. Walkway Mesh 600mm wide | 10. Tek Screw Gal 12-14 x 35mm with Neo Washer |
| 4. Handrail Tube | 11. Walkway Fixing Disc |
| 5. Kneerail Tube | 12. Edge Bar |
| 6. Handrail End Cap | 13. Walkway Batten |
| 7. Kneerail End Cap | |

Con-form[®] **GROUP** Making it *Easy*

con-formgroup.com.au