

# Span+

PROPRIETARY ITEM CODE: SPNPLS+

## PRODUCT DESCRIPTION

Mounted directly to rafters via stub columns, Con-form Group's Span+ is a strong, secure and lightweight solution, ideal for when purlin mounted platforms aren't an option.



**Con-form**  
GROUP

Making it *Easy*

## SPECIFICATION WORDING

- ▶ System shall be Con-form Group Span+, proprietary code: SPNPLS+. Mounted directly to rafters via stub columns.

## APPLICATIONS

Perfect for a wide range of industrial applications:

- ▶ Large condensers.
- ▶ Packaged air-conditioning units.
- ▶ Long spanning airconditioning, refrigeration and ventilation machinery.
- ▶ Other mechanical plant equipment.

## FEATURES AND ADVANTAGES

- ▶ Span+ allows trusses to span greater distances between rafters. Generations ahead of traditional structural steel platforms.
- ▶ Ideal for existing roofs where the purlins simply do not have the capacity to adequately support the equipment on a purlin mounted platform.
- ▶ Essential for any roof mounting situation, great or small, new or existing, where the client would like to realise instant savings over costly traditional mounting.
- ▶ Con-form Group's modular, strong and lightweight platform design distributes loads evenly across the rafters.
- ▶ Built from lightweight, ultra-strong structural grade aluminium, 85% lighter than steel equivalents.
- ▶ Structural grade aluminium design with strong fixings.
- ▶ Built to withstand volatile and extreme weather conditions.
- ▶ Reduction in lead-times and time spent on site.

## TECHNICAL DATA

- ▶ Prefabricated with 6063-T6 grade aluminium components.
- ▶ 13mm knurled expanded aluminium mesh.
- ▶ Lightweight from 19kg/m<sup>2</sup>.
- ▶ Span of 10.5m between rafters or greater.
- ▶ Manufactured in Australia.

## WARRANTY

- ▶ All components backed by a 25 year warranty.



## CERTIFICATIONS

- ▶ **Australian Standards:** AS/NZS1170, AS1170.2, AS1657 & AS1664.1 & Relevant Clauses of the Building Code of Australia
- ▶ **Wind Loads:** Con-form Group products have been certified for wind regions A, B and C  
V500 = 45m/s - Region A - Tc 2.5  
V500 = 57m/s - Region B - Tc 2.5  
V500 = 66m/s - Region C - Tc 2.5

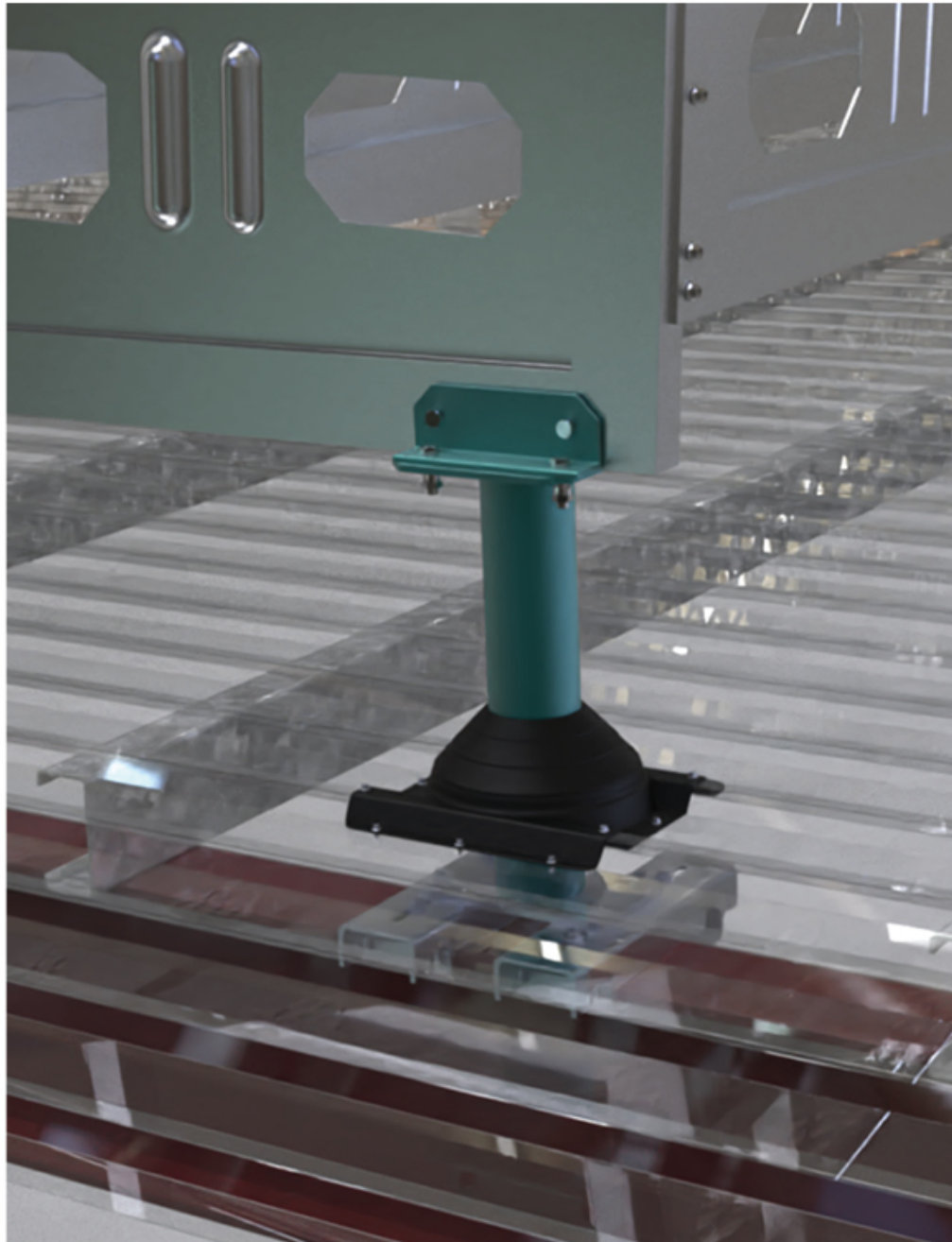


A B C

## MAINTENANCE

- ▶ Visual inspection for any damage or loose fittings is recommended annually. Report any damage or loose fixings to asset manager or building owner for correction

WE OFFER COMPLETE  
ENGINEERING, DESIGN  
& CONSULTING  
SERVICES.



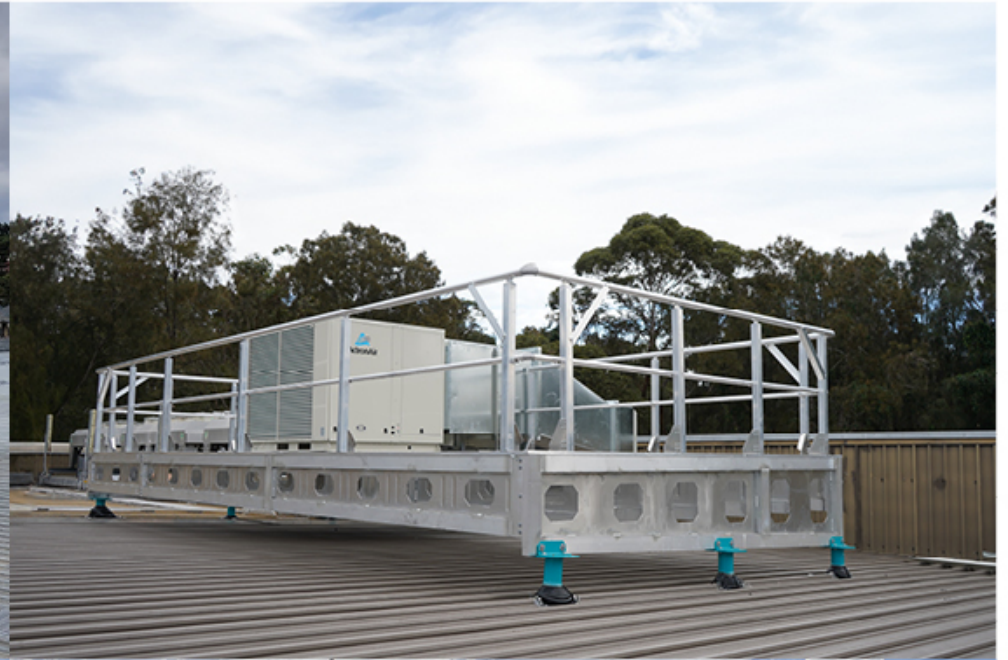
**JOIST - SPACED AT 600/1200 BETWEEN BEARER COLUMNS**

CODE	HEIGHT OF TRUSS [mm]	VERT BM [kNm]	VERT SHEAR [kN]
S4-B-250	250	10.8	21
S4-B-300	350	15.1	21
S4-B-350	400	17.3	21
S4-B-400	450	19.4	21
S4-B-450	450	19.4	21
S4-B-500	500	21.6	21
S4-B-550	550	23.8	21

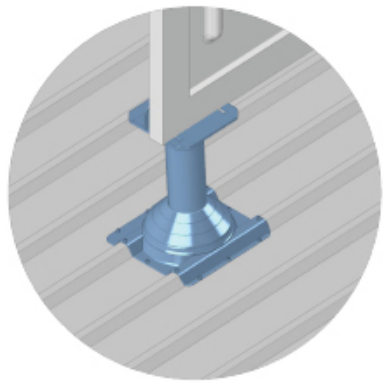
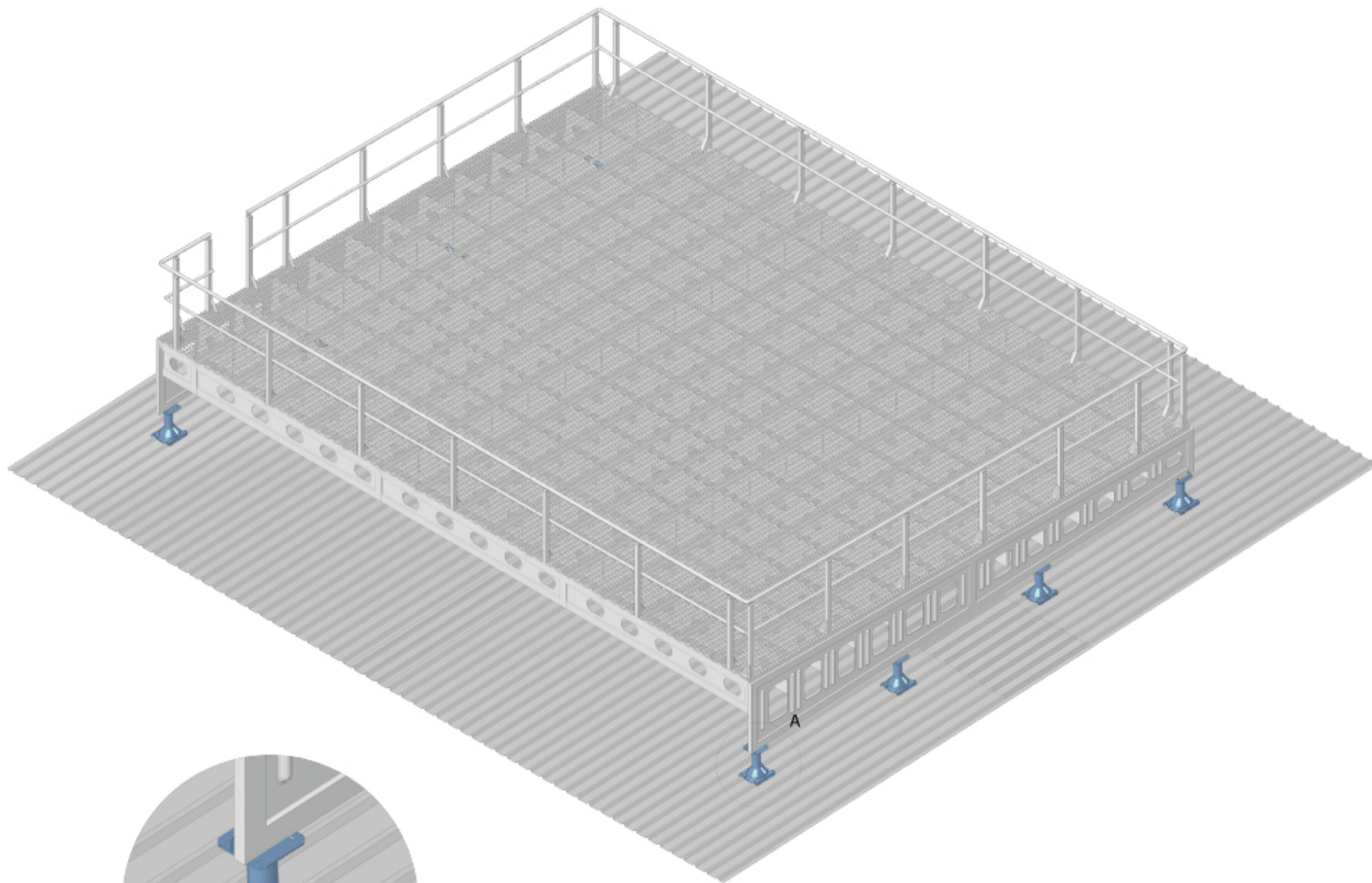
**BEARERS - SUPPORTED BY STUD COLUMNS FIXED ON RAFTERS**

CODE	HEIGHT OF TRUSS [mm]	VERT BM [kNm]	VERT SHEAR [kN]
S4-j-600	600	25.9	21
S4-j-750	750	32.4	21
S4-j-900	900	38.9	21
S4-j-1200	1200	51.8	21





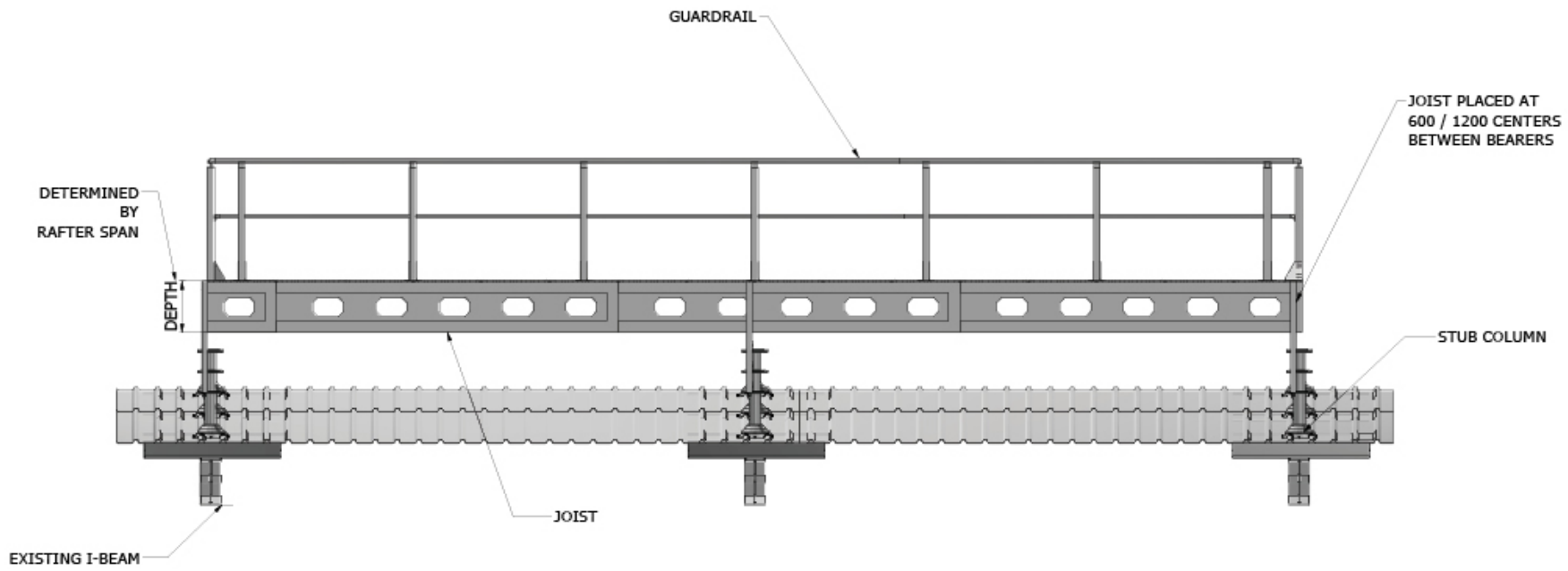




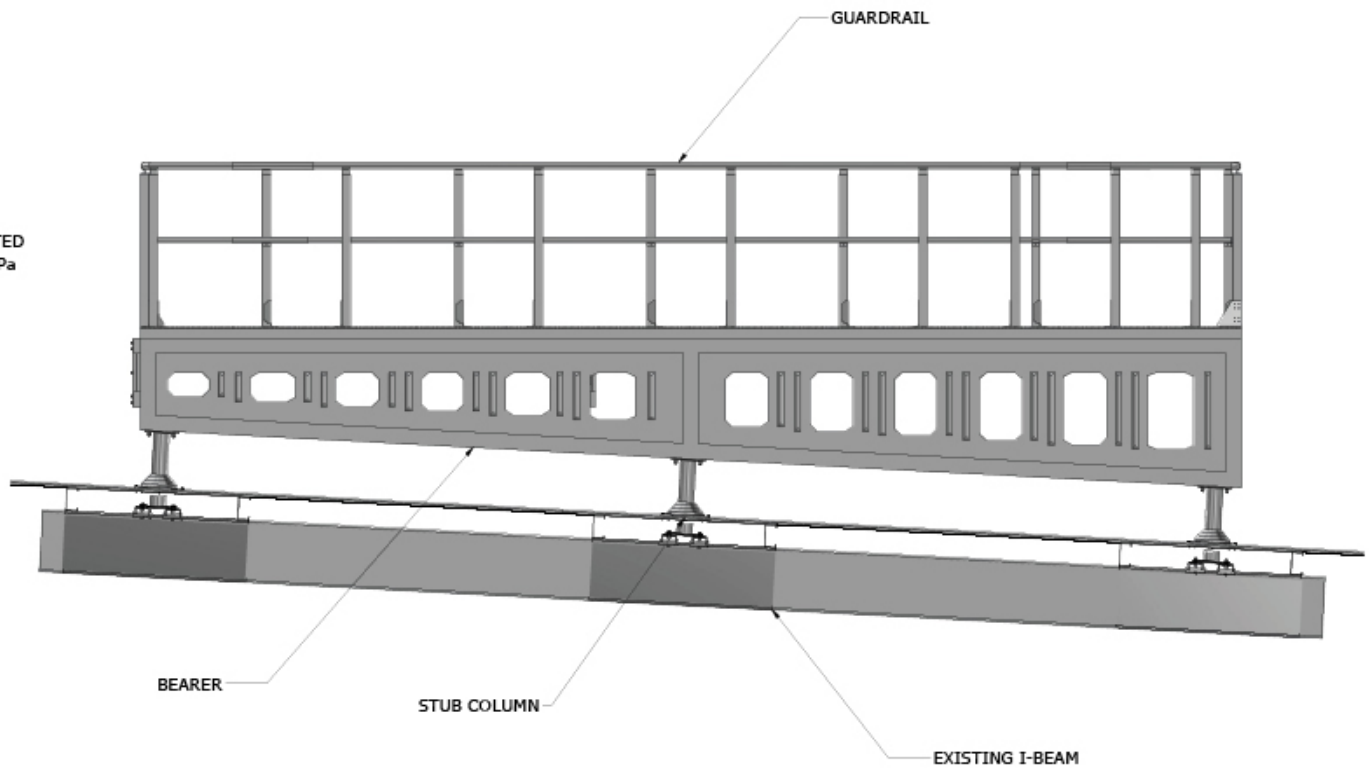
A ( 1 : 10 )

**Notes:**  
 Dimensions shall not be obtained by scaling the drawings. This certification covers the platform only, and does not cover any surrounding structures.

	 <p>ALL DIMS. GIVEN IN MM</p> <p><b>NOT TO SCALE</b></p>

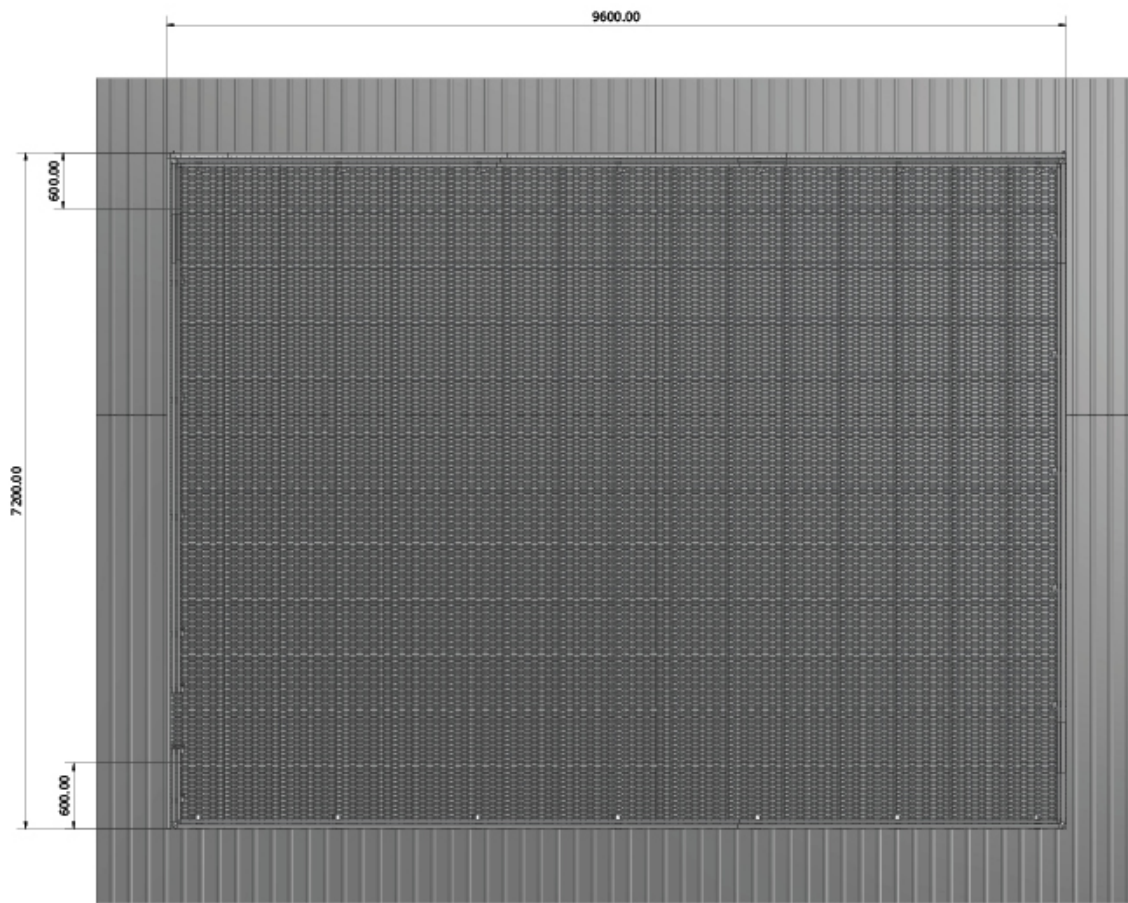


PLATFORM RATED TO 2.5 / 5.0 kPa



**Notes:**  
 Dimensions shall not be obtained by scaling the drawings. This certification covers the platform only, and does not cover any surrounding structures.

<p>Con-form GROUP        Making it Easy        22 COPPOCKVALE DRIVE, LUTON LUT11 6WZ        UK   conformgroup.com.au        1300 662 450</p>	<p>ALL DIMS. GIVEN IN MM  <b>NOT TO SCALE</b></p>



<b>Design Certification:</b> The following review has been carried out in accordance with the following SAI Codes of Practice:
AS 1657 Fixed Platforms, Walkways, Stairways and Ladders Code
AS 1170 Structural Design Actions Code (Parts 0, 1, and 2)
AS 1664.1 Aluminium Structures Code
Structure Importance level 2 (normal structure), in accordance with the BCA;
Super-imposed dead load to platforms = 0.20kPa

<b>Product Options:</b>
Guard Rail
Louvre Screens
Acoustic Screens
Equipment Mounting Rails
Architectural Screens
Access Steps

Fixing Detail*	
Fixing for	Fixing Type
Square/Rectangle Holes	Stainless Steel M8x20mm Cuphead Bolt Set
Round Holes	Stainless Steel 5.5x20 mm Self Drilling Screw
Mesh	Aluminum Upformed Disc and 5.5 x 35mm Self Drilling Screw

\* Note: these fixing details are for platform construction. For fixing details to roof, see the EasyFix Range of specification sheets.

**Notes:**  
Dimensions shall not be obtained by scaling the drawings. This certification covers the platform only, and does not cover any surrounding structures.

<p>Making it Easy</p> <p>62 COPPERON AVE, BUNLURSTIN NSW 2795</p> <p>info@conformgroup.com.au</p> <p>1300 882 480</p>	<p>ALL DIMS. GIVEN IN MM</p> <p><b>NOT TO SCALE</b></p>



**Project**  
**STUB COLUMN DETAIL**

Project Stage  
**DESIGN**

Platform No.

Client  
**CFG STUB COLUMN - VERSION 1**

Product  
-

Dimensions & Pitch

**Revisions**

Revision No.	Revision Date	Changed By

Change

Revision No.	Revision Date	Changed By

Change

Drawn By                      Checked By

Date  
**01-Apr-21**

Sheet No.  
**1 of 7**

**Copyright Information**

© This Drawing is issued on the understanding that it is Copyright and is to be regarded as confidential property of Con-form Group Pty Ltd. It must not be reproduced without the consent of Con-form Group.

Comments

Relevant Contact: -

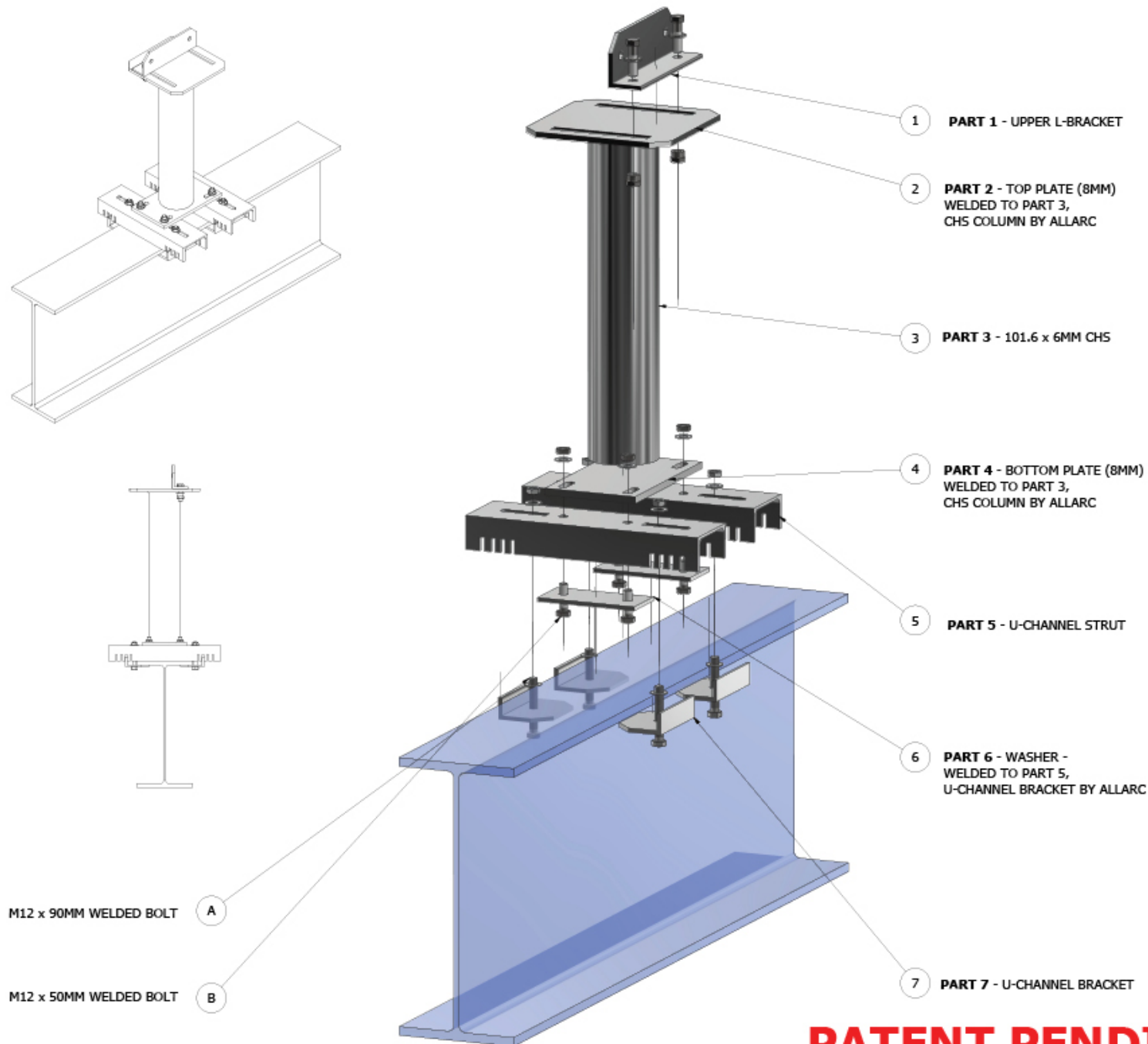
Drawing Number  
**CFG-STUB-COL-0-0-**

Current Revision  
**DWG CREATED**

Sheet Scale  
**0.12**

Sheet Size

**A2**



**PATENT PENDING**