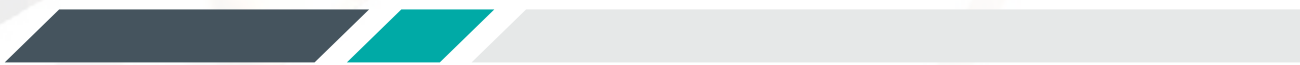




— Span+[®]

Product Specification Sheet



Rafter Mounted Span+® System

System Overview

A twist on traditional structural platforms, Con-form Group's Span+® platform is a strong, secure and lightweight solution, ideal for when surface mounted platforms aren't an option.





Span+[®]

Applications and Advantages

- > Generations ahead of traditional structural steel platforms, Span+ allows trusses to span greater distances between rafters.
- > Ideal for existing roofs where roof purlins do not have the structural capacity to adequately support the mass of mechanical equipment.
- > Essential for any roof mounting situation, great or small, new or existing, where the client would like to realise instant savings over costly traditional mounting.
- > Con-form Group's modular, strong and lightweight platform design distributes loads evenly across the rafters.
- > Built to withstand volatile and extreme weather conditions.
- > Modular design results in reduction of lead-times and time spent on site.
- > Suitable for large condensers, packaged air-conditioning units, long spanning airconditioning, refrigeration, ventilation machinery, other mechanical plant equipment.

Technical Data

- > Bearer and joist system, of C & U profiles, 200mm - 350mm deep.
- > AZ150 steel members with minimum yield strength of 550 MPa.
- > 13mm knurled expanded aluminium mesh.
- > Span of 10.5m between rafters or greater.
- > Lightweight at 20kg/m2.
- > Manufactured in Australia.

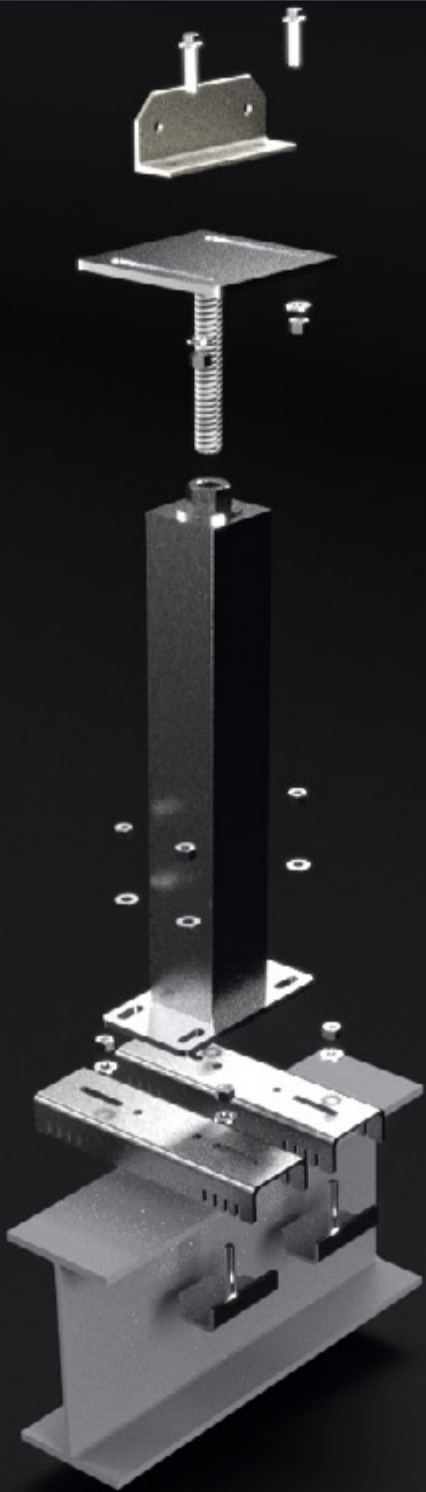
Warranty

- > All components are backed by a 25 year warranty.



Maintenance

- > Visual inspection for any damage or loose fittings is recommended annually.
- > Report any damage or loose fixings to asset manager or building owner for correction.
- > No certified maintenance is required that effects lifespan or performance of product.
- > 100% total recyclable content.



Certification

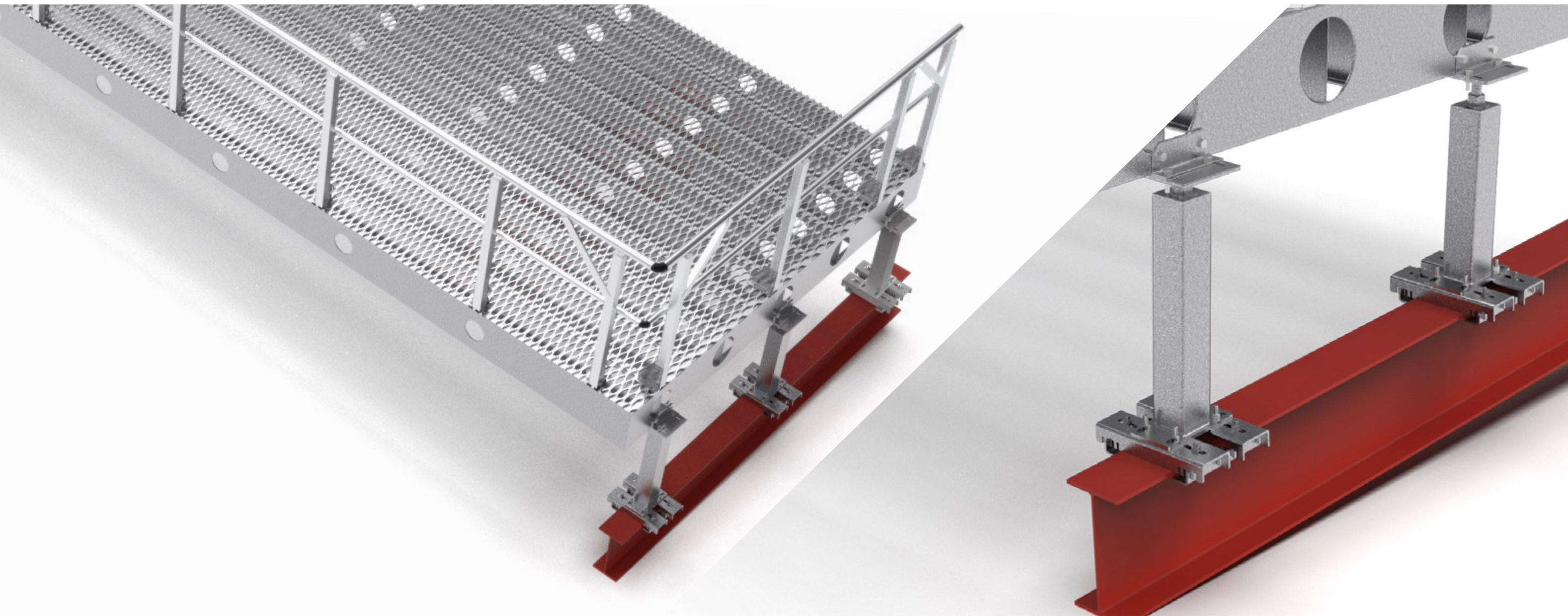
- > Australian Standards: AS1170.1, AS1170.2, AS1657, AS4600 & AS1664.1 & Relevant Clauses of the Building Code of Australia
- > Wind Loads: Con-form products have been certified for wind regions A, B and C.
- > V500 = 45m/s - Region A - Tc 2.5
- > V500 = 57m/s - Region B - Tc 2.5
- > V500 = 66m/s - Region C - Tc 2.5



Project examples

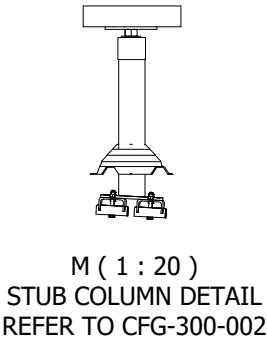
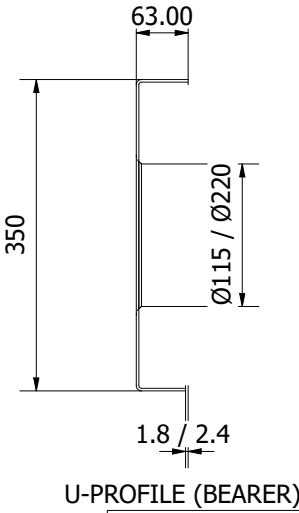
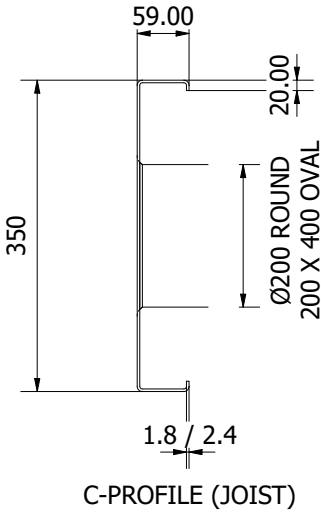
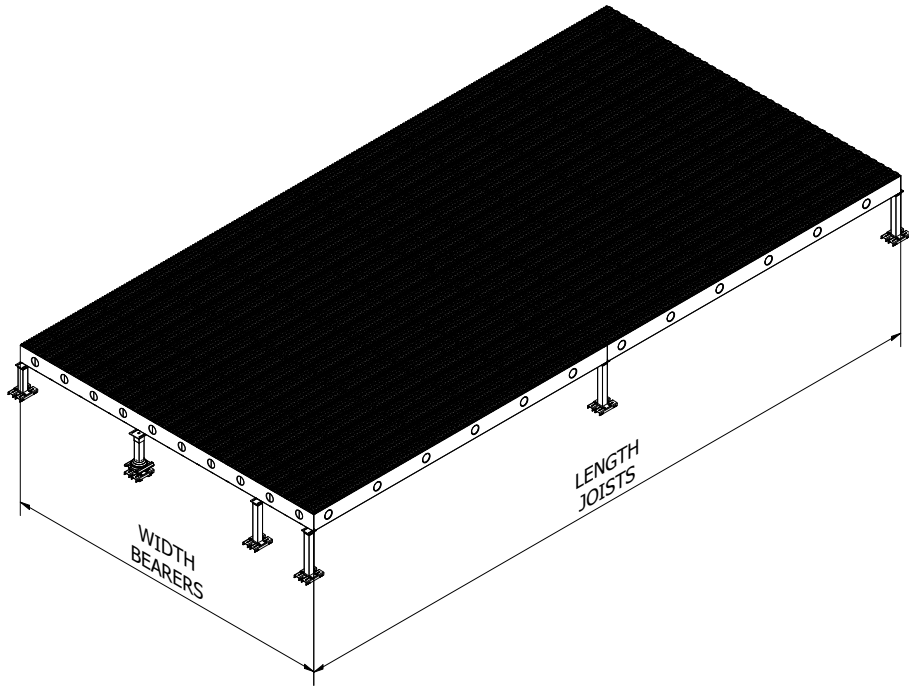
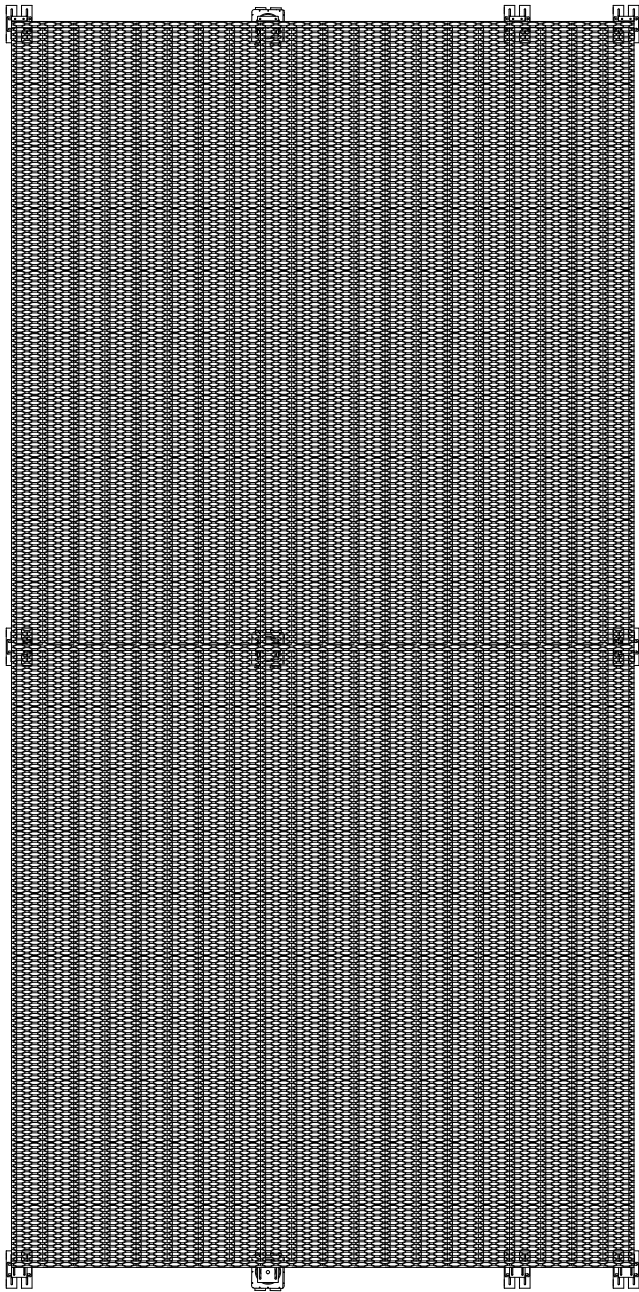
Versatile system options

Large spans, lightweight, strong, off-site fabrication.



PARTS LIST			
ITEM	QTY	PART NUMBER	DESCRIPTION
1	21	Joist 350mm	2.5mm, AZ150, G550
2	2	Bearer 350mm	2.5mm, AZ150, G550
3	1	Expanded Mesh Floor	13mm Knurled Mesh
4	3	Stub Column	Adjustable Stub Column

REVISION HISTORY			
REV	DESCRIPTION	DATE	APPROVED
A		29/05/2024	



Design Notes:

CFG-300-001 Span+
Rafter Mounted HVAC Platform

System Parameters:

- Joist Spacing: 300mm / 600mm
- Joist Span: 2400mm - 12000mm
- Stub Column Spacing: 2400mm
- Joist Profile: 200mm - 350mm
- Thickness: 1.0mm - 2.5mm
- Joist & Bearer Material: G550, AZ150, Steel

Refer to CFG-300-002
For Stub Column Details

Design Certification

The following review has been carried out in accordance with the following SAI Codes of Practice:


AS 1657 Fixed Platforms, Walkways, Stairways and Ladders Code

AS 1170 Structural Design
Actions Code (Parts 0, 1, and 2)

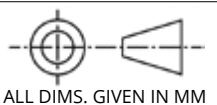
AS 4600 Cold-formed Steel Structures
Structure Importance level 2 (normal structure), in accordance with the BCA;

Super-imposed dead load
to platforms = 0.20kPa

Mateia:



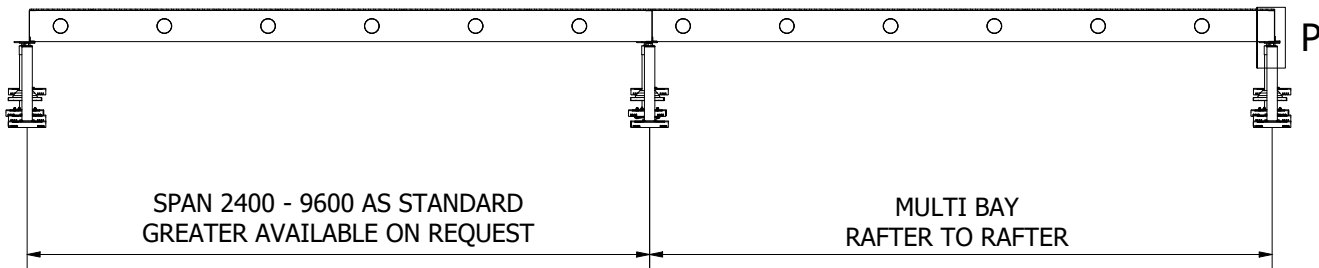
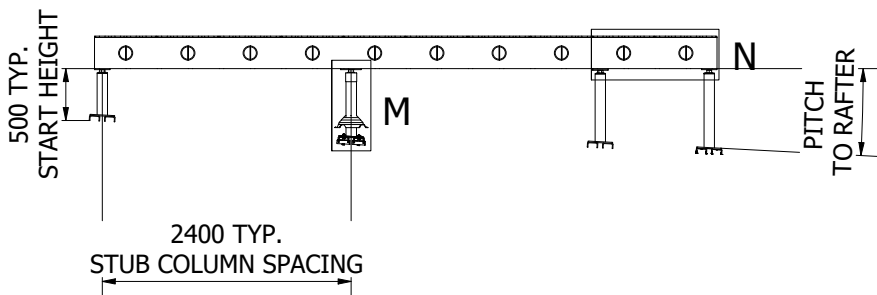
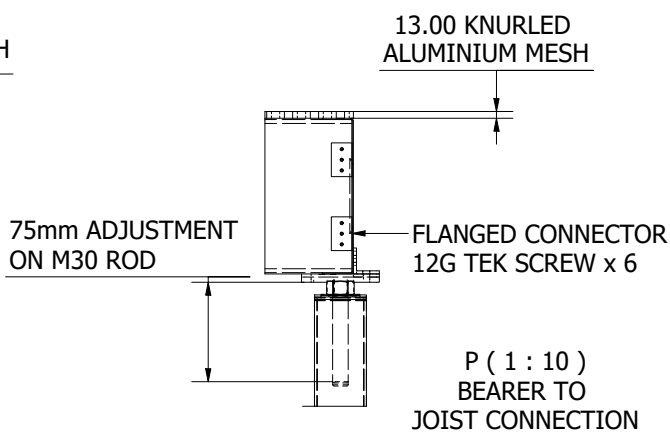
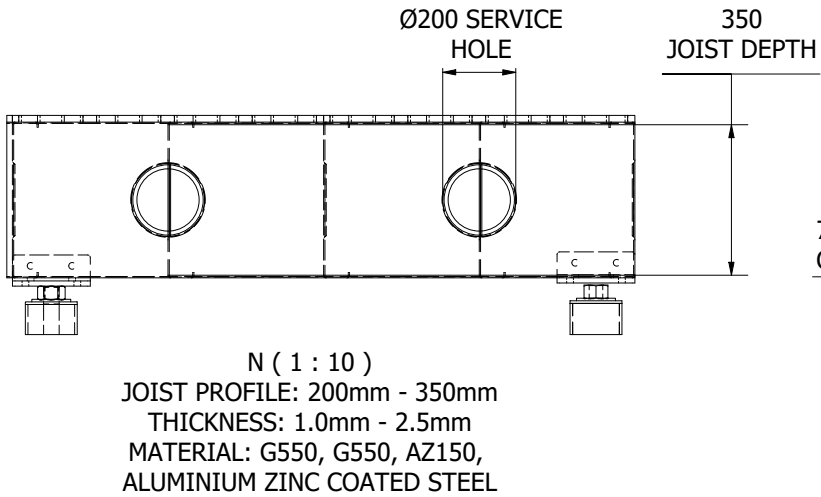
19 CORPORATION AVE, BATHURST NSW 2795,
info@conformgroup.com.au
1300 882 490
Product



ALL DIMS. GIVEN IN MM
Scale: 1 : 50 REV:

Drawing Title
CFG-300-001

Sheet
1 OF 2



Joist Span Table

Single C

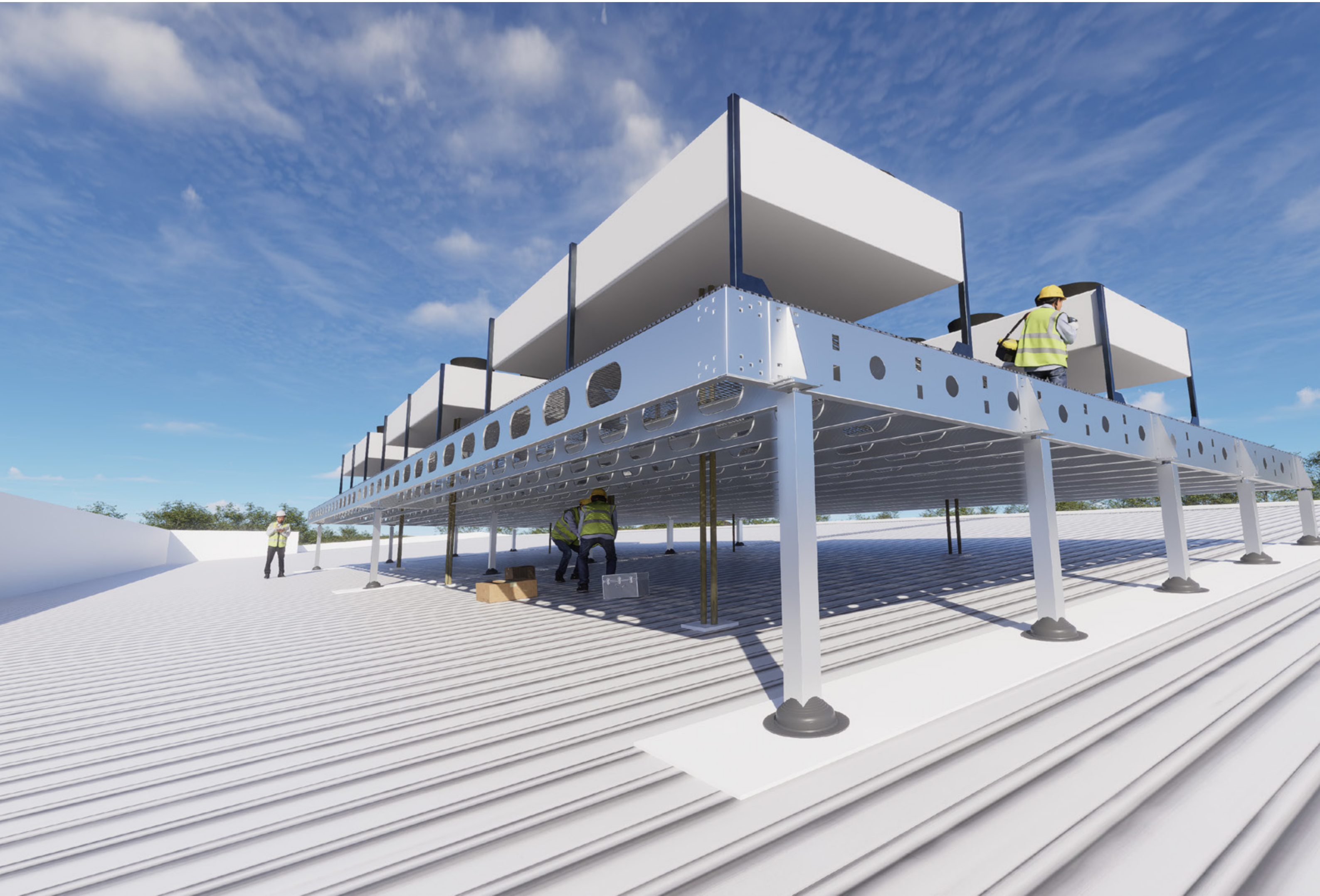
Max Span								
JOIST C-C SPACING	1.5kPa	2kPa	2.5kPa	3kPa	3.5kPa	4kPa	4.5kPa	5kPa
600	8750	7650	6800	6150	5600	5200	4800	4500
500	9300	8500	7600	6850	6300	5800	5400	5100
400	10050	9250	8600	7850	7200	6700	6250	5850
300	11100	10200	9550	9000	8500	7900	7400	7000

Box

Max Span								
JOIST C-C SPACING	1.5kPa	2kPa	2.5kPa	3kPa	3.5kPa	4kPa	4.5kPa	5kPa
600	10700	9800	9100	8600	8150	7800	7400	7000
500	11450	10500	9750	9150	8700	8350	8000	7700
400	12400	11350	10600	9950	9450	9050	8700	8350
300	13750	12600	11750	11050	10500	10050	9650	9300

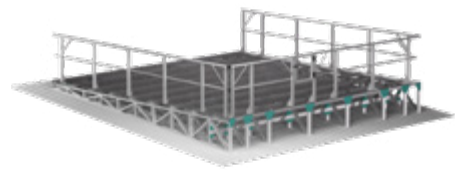
*units shown in mm





Product Overview

Making it easy every step of the way.



EasyMech **MR**®

Purlin-Mounted HVAC+R Deck



Span+ **Platform**®

Rafter-Mounted HVAC+R Deck



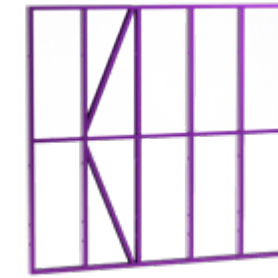
EasyMech **CR**®

Concrete Mounted HVAC+R Deck



Con-form **Access**®

Roof Access Systems & Walkways



Con-form **Frames**®

Wall Enveloping & Internal Walls & Ceilings



Con-form **Floors**®

Mezzanine & Sub-Floor Frames



Conceal **Wall**® & Conceal **AeroWall**®

Premium Visual Barriers with Airflow options



Louvre **Wall**®

Visual Barriers with Airflow



Acoustic+ **Wall**®

Tunable Acoustic Visual Barriers



Acoustic+ **LouvreWall**®

Acoustic Visual Barriers with Airflow



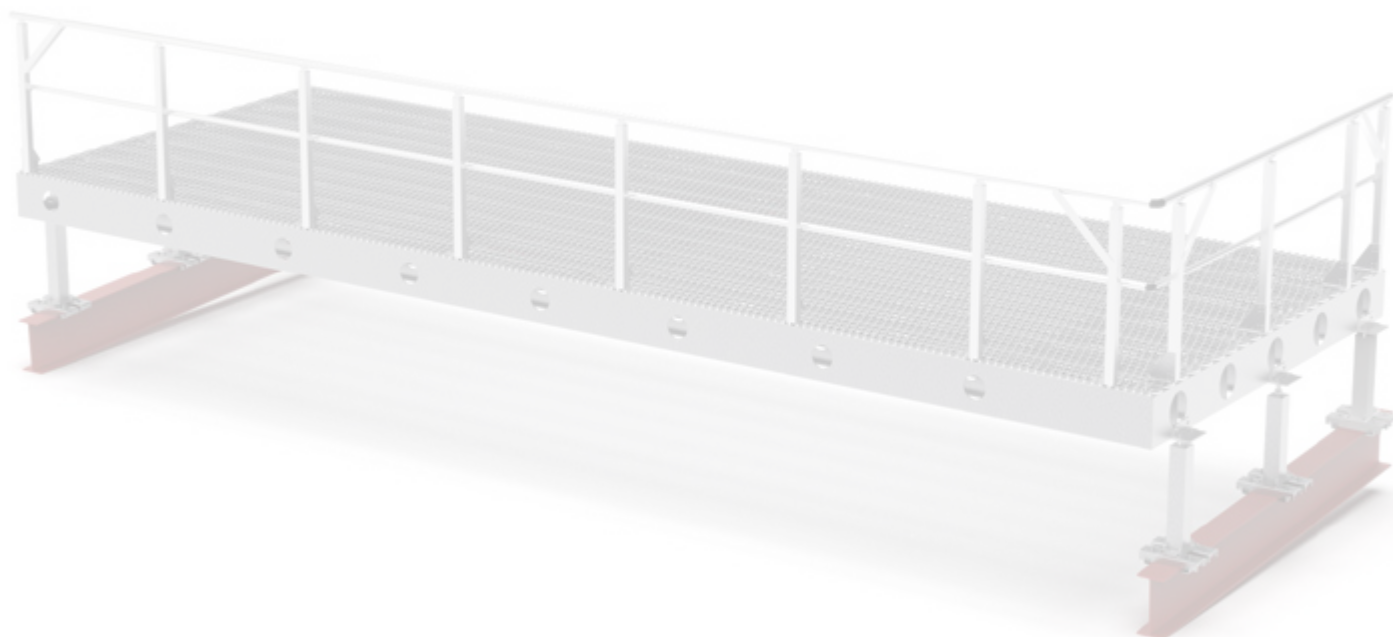
Acoustic+ **UltraWall**®

Premium Acoustic Visual Barriers



Screen to **Roof**®

Screen Systems Directly Mounted to Roof



Con-form[®]
GROUP
Making it *Easy*



Our Capability Brands



Manufacturing
Centre of Excellence



Digital Design
Centre



Product
Development Centre



Custom
Engineered Product



Architectural
Creative Partner



Design
To Install